

LED FHD Monitor

MT-24-L (-NB)



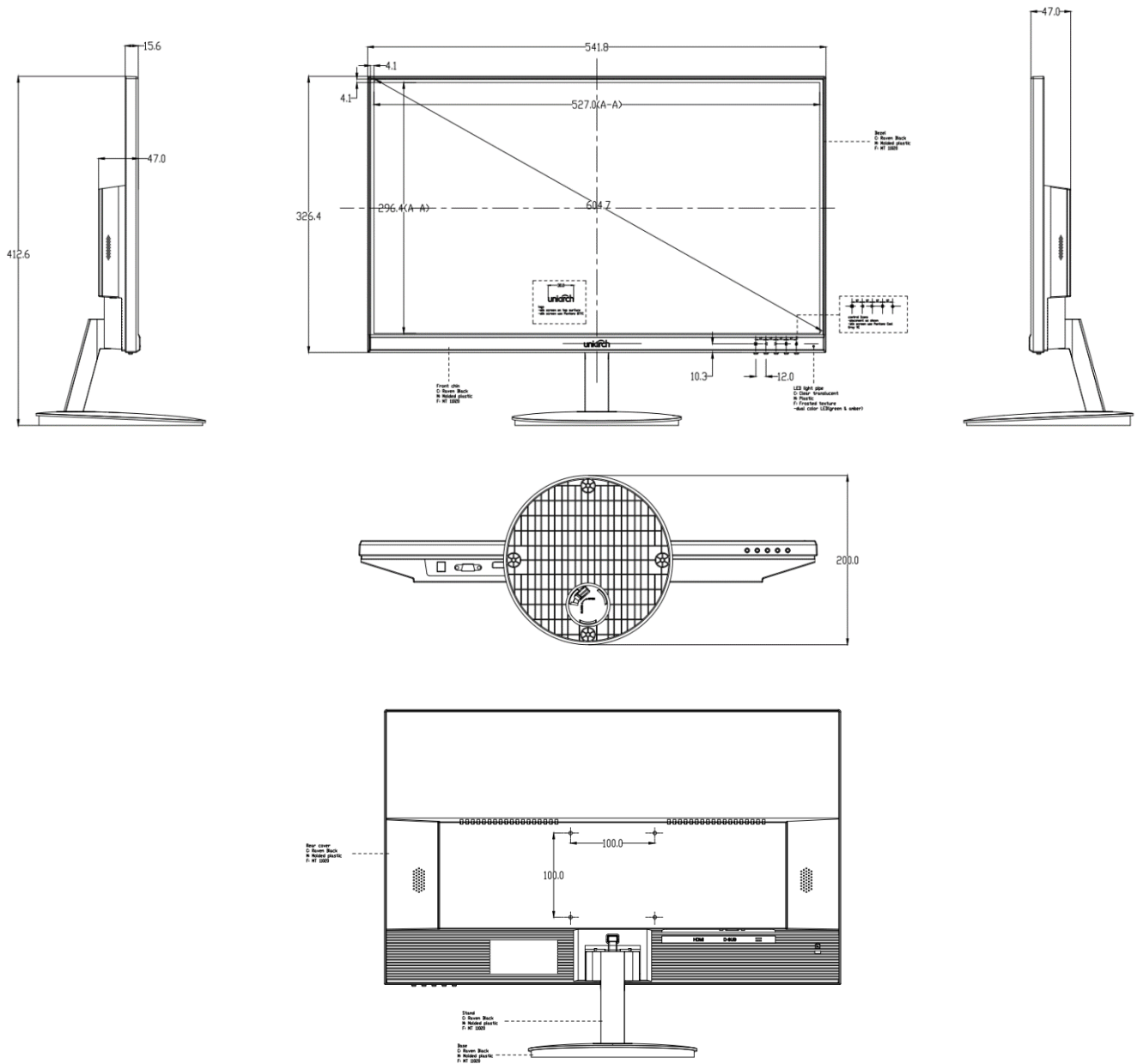
Key Features

- True color display and perfect color reproduction.
- Wide viewing angle:178°(H)/ 178°(V) .
- No color shift from any view angle.
- Specific menu design, which is simple to operate.
- Support 7*24 working and lower power consumption.
- Adaptively recognize signal.
- VESA stand bracket.
- Support multiply language.
- High fidelity digital processing for a brilliant and vivid video.
- Professional thermal design to extend equipment lifespan.
- Screen can reduce blue light, protect eyes.
- Without ripple,use smooth dimming with DC to eliminate screen flicker.
- Three sides super slim design, min width can be 2.8mm.
- High light transmittance, uniform brightness, rich color, wide color gamut.

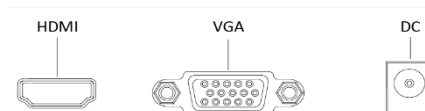
Specifications

Model	MT-24-L (-NB)
Display	
Display Type	LED Backlight
Screen Size	23.8"
Aspect Ratio	16:9
Pixel Pitch(mm)	0.2745*0.2745
Max Resolution	1920*1080
Brightness(cd/m ²)	250
Contrast	3000:1
Response Time(ms)	19
Color	16.7M
Viewing Angle	Horizontal 178°, Vertical 178°
Refresh Rate	60Hz
Interface	
Input	1*VGA、1*HDMI
OSD	
Multi-Language	8 (English, France, Spanish, German, Russia, Korea, Japanese, Simplified Chinese)
Mounting	
VESA(mm)	100*100
General	
Power Supply	DC 12V,2A
Consumption	≤24 W(on) ≤0.5 W(Standby)
Operation Temperature	0°C ~ 40 °C/32°F~104°F
Operating Humidity	20%~85% (No Condensation)
Storage Temperature	-10°C ~50°C /14°F~122°F
Storage Humidity	10%~90% (No Condensation)
Dimension (W*H*D)(mm)	541.8*412.6*200.0 (With Pedestal)
Package(W*H*D)(mm)	606*405*125
Weight	Net Weight:3.3Kg(7.28Lb) Gross Weight:4.6(10.14Lb)
Accessory	
Standard	HDMI Cable,Adapter,Pedestal,Quick Guide
Optional	Hanging Bracket(Model: HB-4022-A)

Dimensions



Interfaces



www.uniview.com/uniarch

©2022 Zhejiang Uniview Technologies Co., Ltd. All rights reserved.

*Product specifications and availability are subject to change without notice.